



Registered trademark of
the General Electric Company.

Centricity Training Manual



STRATEGIC BUSINESS SYSTEMS, Incorporated

THE SUPPORT PEOPLE

CHART MODULE ADMINISTRATION *Training Manual*

CENTRICITY® PRACTICE SOLUTION-EMR

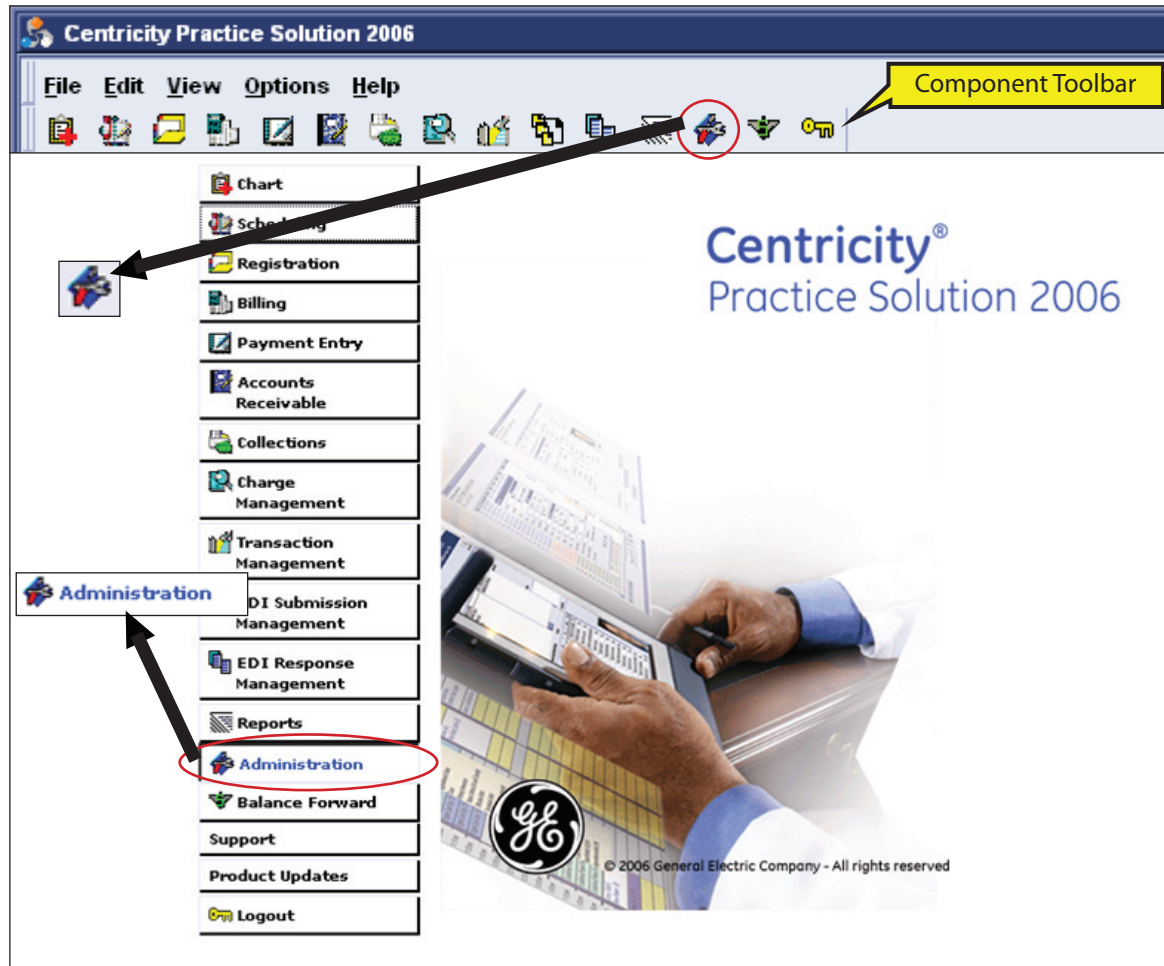
Centricity is a registered trademark of GE Medical Systems Information Technologies, Inc.

Strategic Business Systems, Inc. is an Authorized Independent Value Added Reseller of GE Medical Systems Information Technologies, Inc.

Table of Contents

Lesson 1: User/Location Setup Folder.....	4
Lesson 2: System Folder	15
Lesson 3: Chart Folder.....	25
Lesson 4: Chart Documents Folder.....	41
Lesson 5: Handouts Folder	52
Lesson 6: Letters Folder	58
Lesson 7: Reports Folder	64
Lesson 8: Codes Folder	67
Lesson 9: Preferences/Security	80
Lesson 10: Edit Menu Items.....	99
<i>Appendix</i>	
Global Quick Text.....	107
Keyboard Shortcuts	109
Adding Users to Active Directory Windows Server 2003	113
Adding Users to Active Directory Windows XP On Domain	118
Adding Users to Active Directory Windows XP Not On Domain...	124

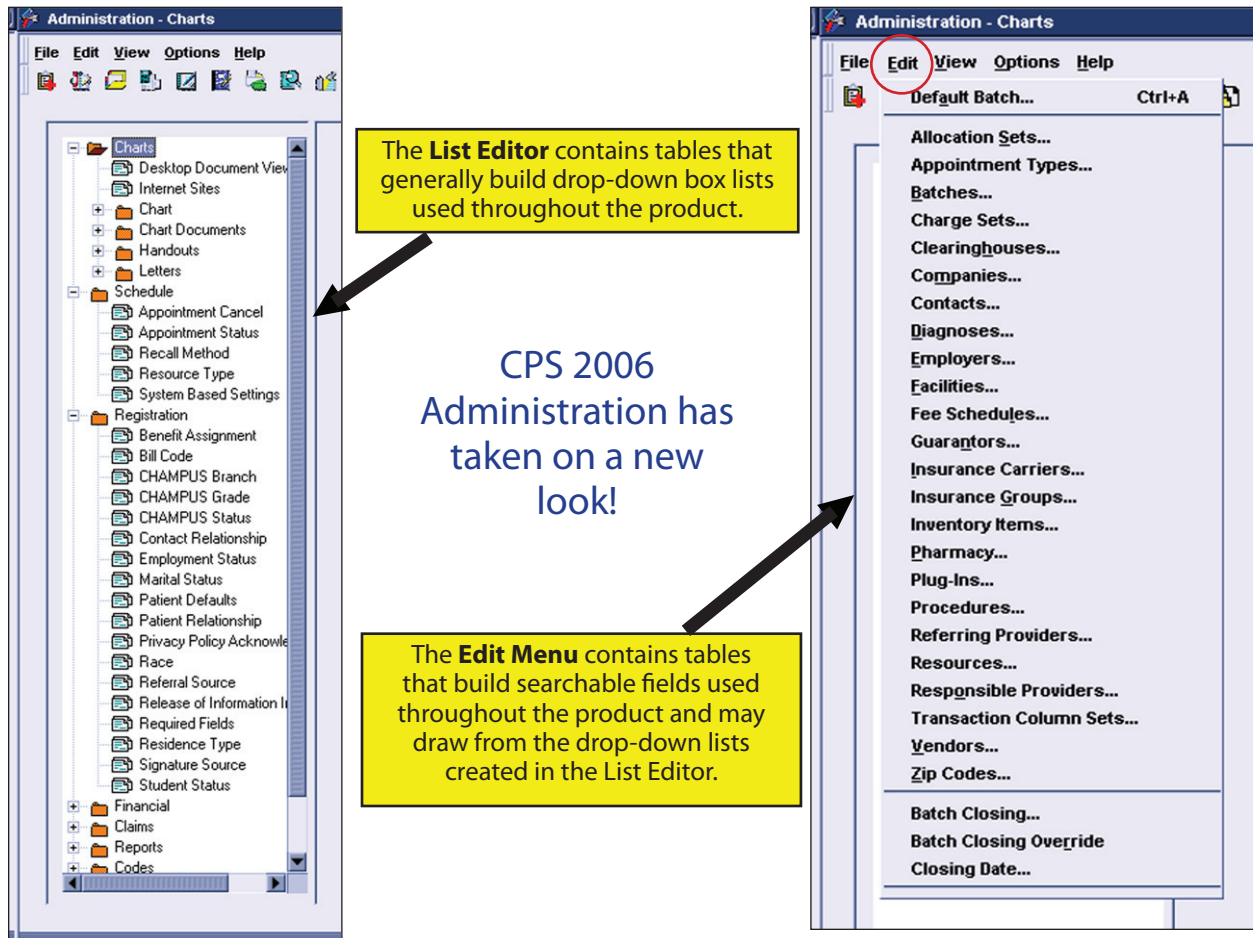
Administration



The Administration component of Centricity Practice Solution 2006 (CPS) is where all the tables are customized and maintained for both the Practice Management and Electronic Medical Record components of the product. There are two areas that will require set up, in the List Editor folders, and in the Edit Menu.



List Editor vs. Edit Menu



When the Administration component opens, the List Editor displays along the left side of the window with the following folders:

- Charts
- Schedule
- Registration
- Financial
- Claims
- Reports
- Codes
- System
- Mobile

The Edit Menu is accessed by clicking **Edit** on the toolbar. Each table listed under Edit Menu will determine searchable fields that will be used within the product.

We will begin with the List Editor in this manual, then follow with the Edit Menu.

