



Registered trademark of
the General Electric Company.

Centricity Training Manual



STRATEGIC BUSINESS SYSTEMS, Incorporated

THE SUPPORT PEOPLE

EDI SUBMISSION/ RESPONSE MANAGEMENT & REMITTANCE

Training Manual

CENTRICITY® PRACTICE SOLUTION *Practice Management*

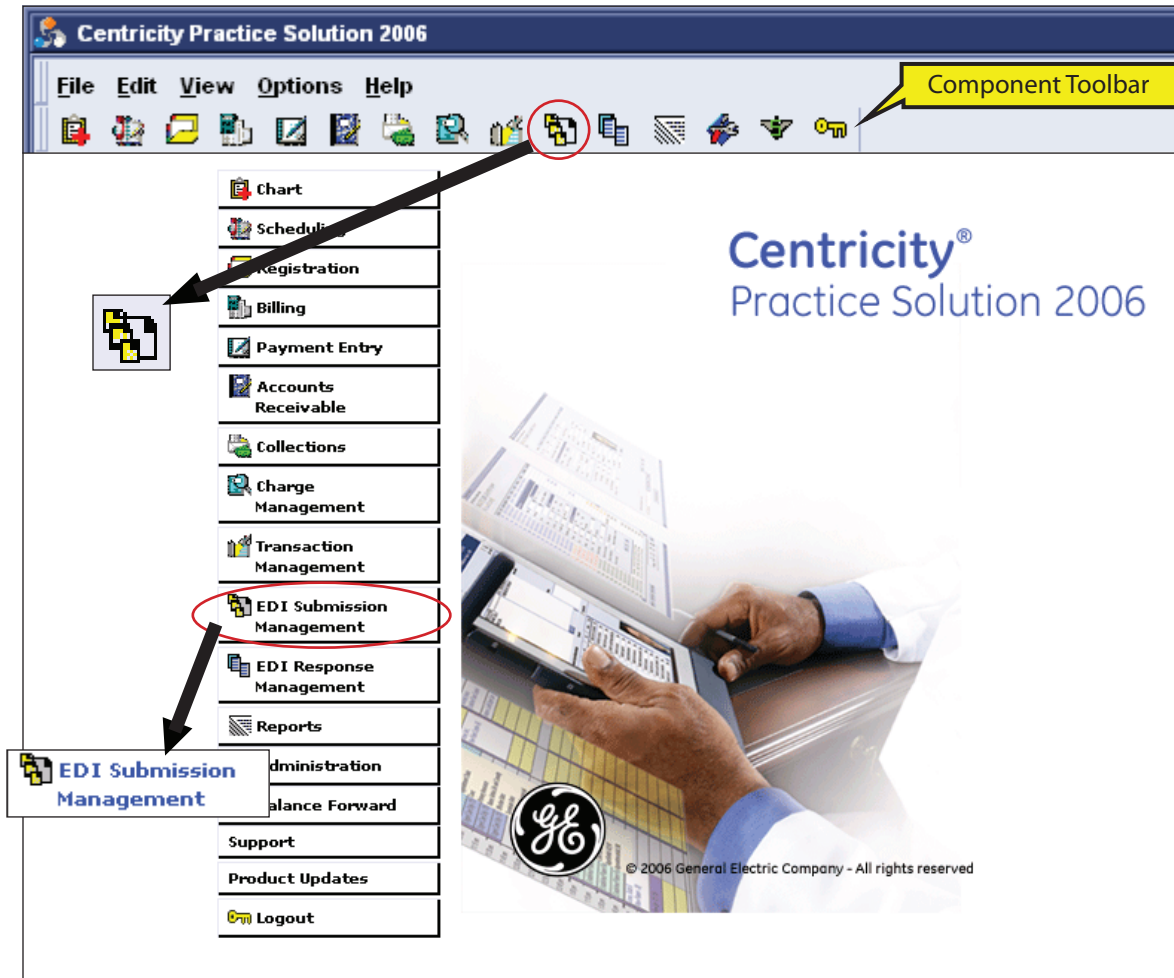
Centricity is a registered trademark of GE Medical Systems Information Technologies, Inc.

Strategic Business Systems, Inc. is an Authorized Independent Value Added Reseller of GE Medical Systems Information Technologies, Inc.

Table of Contents

EDI Submission Management.....	2
Reviewing Batches	4
EDI Submission Management Claims.....	5
Reviewing the Raw Data	6
EDI Submission Management Statements	7
Sending Batched Claims	8
Exporting Batches.....	9
Deleting Batches.....	10
EDI Response Management	11
Reviewing Reports	13
EDI Reports from McKesson	14
Viewing Reports	21
Remittance Set-Ups	22
Transaction Column Sets (TCS)	23
Clearinghouses	24
Insurance Carriers	28
Non-Payment codes	31
Remittance Processing	35
Balancing the Remittance.....	39

EDI Submission Management



Once a visit has been set to Electronic Filing Method in the **Billing** component, the visit is then “batched” and will be sent out to the clearinghouse electronically. At the point the visit is batched, it can be viewed, sent, exported or deleted in the EDI Submission Management component.

To view and send batches, click the **EDI Submission Management** button on the main menu, or click the icon shown above on the component tool bar. The **File/Open** command can also be used to open this component.

Prior to submitting claims for the first time however, please validate the following tables in Administration to insure proper set up has been completed (please refer to the Administration set up manual):

- Check Clearinghouse Settings
- Check Insurance Carrier table and EDI setup for each carrier
- Check Plug Ins table and make sure appropriate plug in is setup
- Check Doctor Setup
- Check Facility Setup

